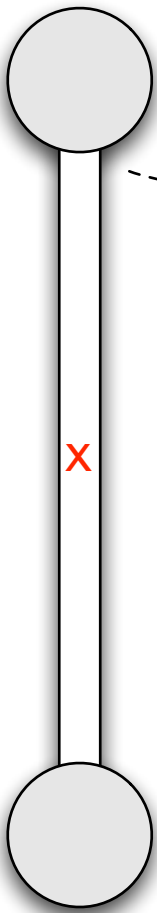


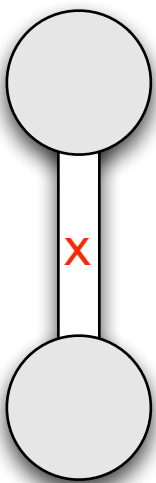
Rotational Inertia Notes

Mass CLOSE to pivot = EASIER to start/stop spinning

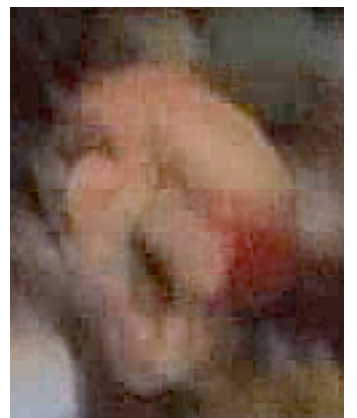
Mass FAR from pivot = TOUGHER to start/stop spinning



Tougher to get going;
tougher to stop.



Easier to get going;
easier to stop.



Newton's 1st Law for Rotation

Objects maintain spin and DIRECTION OF AXIS,
unless there's an outside Torque.

